



**Government of India
Ministry of Earth Sciences
India Meteorological Department**



Press Release

Date: 13th September, 2025

Time of Issue: 1330 hours IST

Subject: i) Under the influence of Low pressure area over westcentral & adjoining northwest Bay of Bengal, north Andhra Pradesh-south Odisha coasts, heavy rainfall likely over Odisha & Maharashtra during 13th-15th; Coastal Andhra Pradesh & Yanam on 13th & 14th; Chhattisgarh during 13th-16th; Telangana during 13th-17th September with very heavy rainfall over Telangana on 13th; Coastal Maharashtra on 14th & 15th and Madhya Maharashtra on 15th September, 2025.

ii) Conditions are becoming favourable for withdrawal of Southwest Monsoon from some parts of West Rajasthan around from 15th September, 2025.

Realised weather during past 24 hours till 0830 hours IST of today, the 13th September, 2025:

- ❖ **Heavy to very heavy rainfall with Extremely heavy rainfall (≥ 21 cm)** has been recorded at isolated places over Uttarakhand.
- ❖ **Very heavy rainfall (12-20 cm)** has been recorded at isolated places over Assam, Sub-Himalayan West Bengal & Sikkim and Marathwada.
- ❖ **Heavy rainfall (7-11 cm)** has been recorded at isolated places over Himachal Pradesh, West Uttar Pradesh, Odisha, Bihar, East Madhya Pradesh, Vidarbha, Jharkhand, Arunachal Pradesh, Mizoram, Telangana, Coastal Andhra Pradesh, North Interior Karnataka, Tamil Nadu & Puducherry.

For more details of realised weather, kindly refer [Annexure I](#).

i. Weather Systems, Forecast and Warnings (refer to [Annexure II & III](#)):

- ❖ Conditions are becoming favourable for withdrawal of Southwest Monsoon from some parts of West Rajasthan around from 15th September.
 - ❖ The western end of the **Monsoon trough** at mean sea level runs near normal and eastern end runs south of its normal position.
 - ❖ The **low pressure area** lay over westcentral & adjoining northwest Bay of Bengal, north Andhra Pradesh-south Odisha coasts at 0830 hrs IST of today, the 13th September, 2025. It is likely to move west-northwestwards across south Odisha and adjoining north Andhra Pradesh and south Chhattisgarh during next 2 days.
 - ❖ An upper air **cyclonic circulation** lies over southwest Bihar & adjoining Jharkhand and another over central Assam in lower tropospheric levels.
 - ❖ A **trough** runs from cyclonic circulation associated with low pressure area to South Maharashtra in lower & middle tropospheric levels tilting southwestwards with height.
 - ❖ An upper air **cyclonic circulation** lies over Northeast Rajasthan & neighbourhood in lower tropospheric levels.
 - ❖ A **trough** runs from South Interior Karnataka to Gulf of Mannar in lower tropospheric levels.
- Under the influence of these systems, the following weather is likely:

Northeast India:

- ❖ Light/moderate rain/thunderstorm at most/many places with isolated **heavy rainfall** likely over Arunachal Pradesh during 13th-18th; Assam & Meghalaya, Nagaland, Manipur, Mizoram & Tripura during 13th-16th & on 18th, 19th September with **very heavy falls over Arunachal Pradesh during 13th -16th; Nagaland, Manipur, Mizoram & Tripura on 13th and Assam & Meghalaya on 14th & 15th September.**

South Peninsular India:

- ❖ Light to moderate rain/thunderstorm & gusty winds (speed 30-40 kmph) at many/some places with isolated **heavy rainfall** likely over Tamil Nadu on 13th & during 16th-19th; Coastal Andhra Pradesh & Yanam on 13th & 14th; Rayalaseema on 13th; Telangana during 13th-17th; North Interior Karnataka during 13th-16th September with **very heavy falls over Telangana on 13th September**.
- ❖ Strong surface winds (speed reaching 30-50 kmph) very likely over Coastal Andhra Pradesh & Yanam and Rayalaseema during next 5 days.

East & Central India:

- ❖ Light to moderate rain/thunderstorm at most/many places with isolated **heavy rainfall** likely over West Madhya Pradesh during 14th-16th; East Madhya Pradesh, Vidarbha & Odisha during 13th-15th; Chhattisgarh during 13th-16th; Andaman & Nicobar Islands on 14th & during 17th-19th; Sub-Himalayan West Bengal & Sikkim during 13th-19th; Bihar during 13th-17th; Jharkhand during 15th-17th September with isolated **very heavy falls over Sub-Himalayan West Bengal & Sikkim on 13th & 14th and Bihar during 14th-16th September**.

West India:

- ❖ Light to moderate rain/thunderstorm at many/some places with **isolated heavy rainfall** likely over Konkan & Goa, Madhya Maharashtra & Marathawada during 13th-15th September with **very heavy falls over Konkan & Goa on 14th & 15th and Madhya Maharashtra on 15th September**.

Northwest India:

- ❖ Light to moderate rain/thunderstorm at some/isolated places with **isolated heavy rainfall** likely over Himachal Pradesh on 13th & 14th; Uttarakhand during 13th-16th; north Punjab on 13th; East Uttar Pradesh during 15th-19th September with **very heavy falls over Uttarakhand on 13th September**.

Fishermen warning:

Fishermen are advised not to venture into the following areas:

Arabian Sea:

- Westcentral & adjoining southwest Arabian Sea and along & off Somalia coast during 13th to 15th September and off Oman-Yemen coasts during 14th-15th September.
- Northwest & adjoining westcentral Arabian Sea along & off Oman coast on 16th September, on 13th & 14th September.
- Eastcentral Arabian Sea and along & off Maharashtra coast on 15th September.

Bay of Bengal:

- Westcentral & adjoining northwest Bay of Bengal and along & off Andhra Pradesh - North Tamil Nadu coasts on 13th September.
- Gulf of Mannar & adjoining Comorin area and over parts of southwest Bay of Bengal & along and off south Sri Lanka coast during 13th-18th September.

ii. Weather conditions and forecast over Delhi/NCR during 13th September to 16th September 2025 (Annexure IV)

For more details, kindly refer National Weather Bulletin:

https://mausam.imd.gov.in/responsive/all_india_forecast_bulletin.php

For District wise warnings refer: <https://mausam.imd.gov.in/responsive/districtWiseWarningGIS.php>

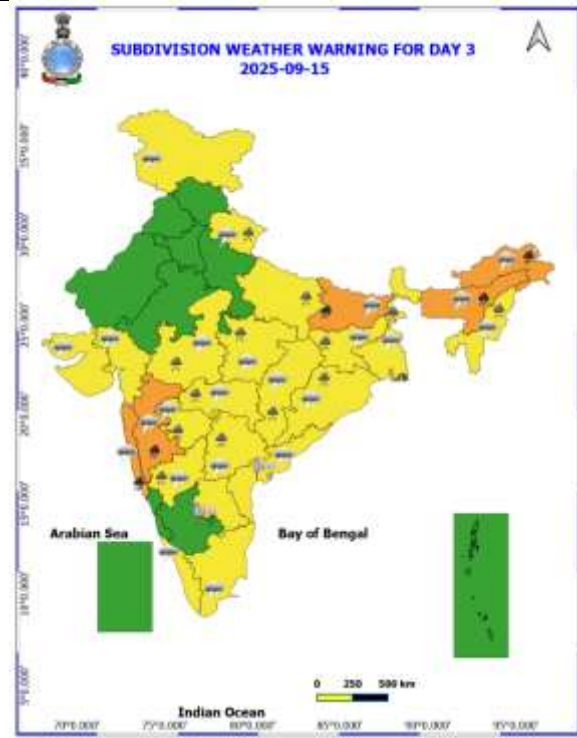
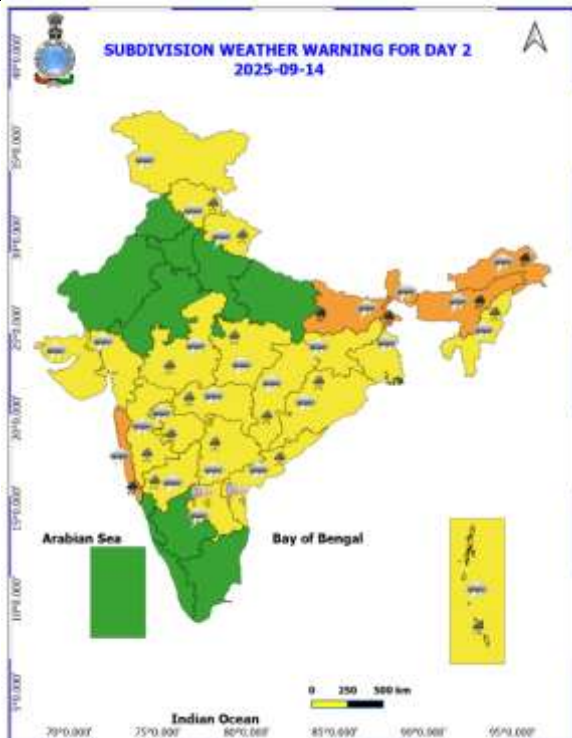
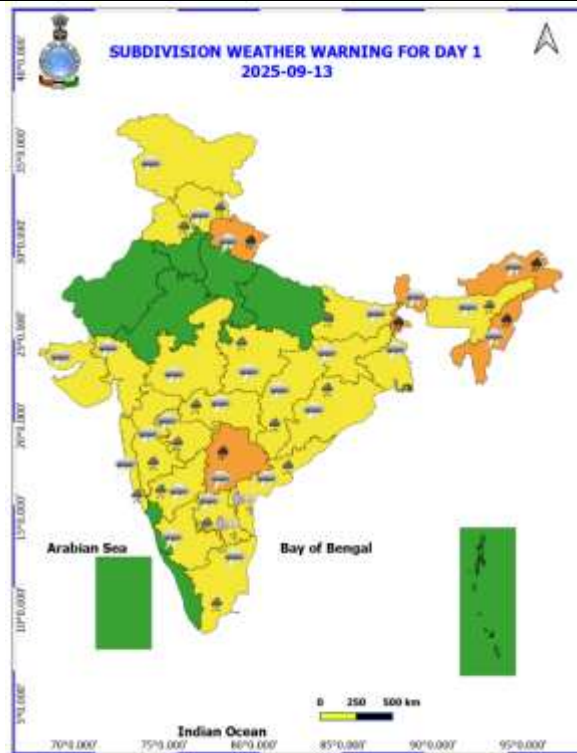
For Fishermen warning refer <https://rsmcnewdelhi.imd.gov.in/fishermen-warning.php>

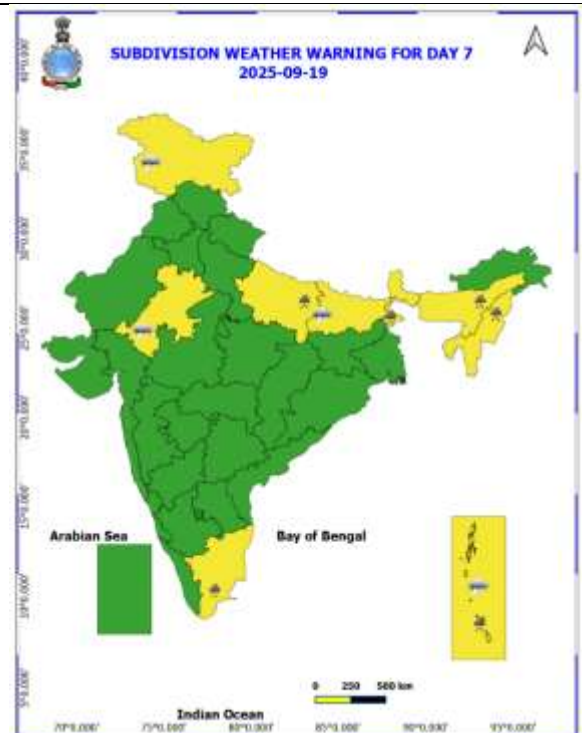
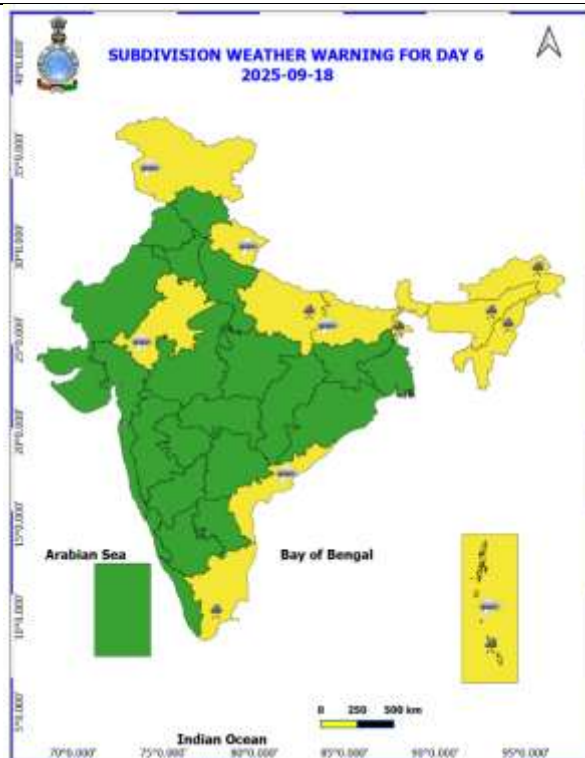
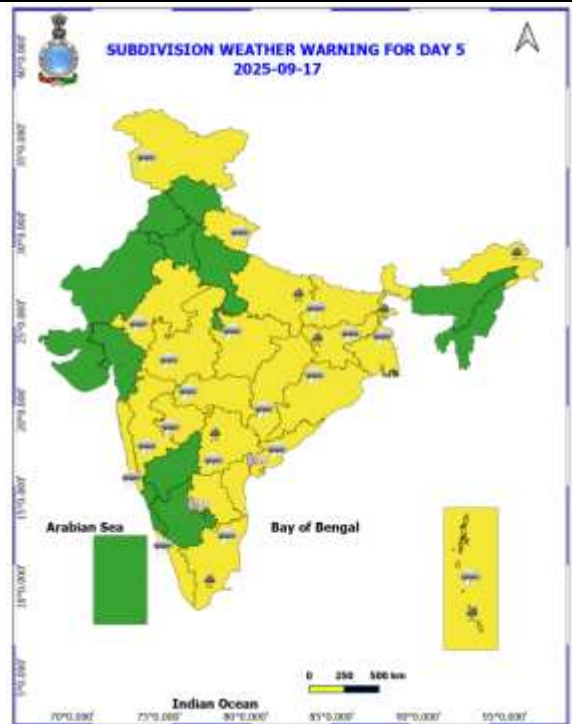
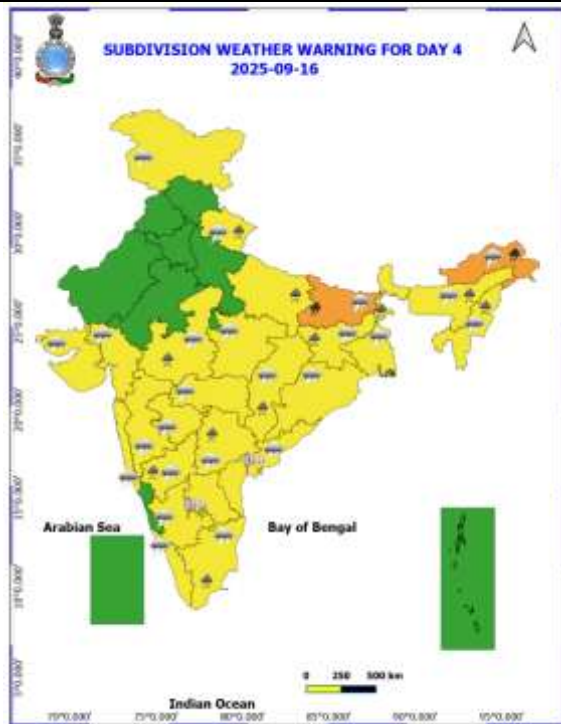
Rainfall recorded (in cm) during past 24 hours till 0830 hours IST of today, the 13th September (≥ 7 cm):

- ❖ **Uttarakhand:** Haripur (dist Dehradun) 25, Narendranagar (dist Garhwal Tehri) 23, Mussoorie (dist Dehradun) 19, Jollygrant (dist Dehradun) 11, Sama (dist Bageshwar) 11, Rishikesh (dist Dehradun) 8, Hardwar (dist Hardwar) 8;
- ❖ **Sub-Himalayan West Bengal & Sikkim:** Barobhisha (dist Alipurduar) 17, Chel (dist Jalpaiguri) 16, Buxaduar (dist Alipurduar) 14, Hilla T.e. (dist Jalpaiguri) 14, Chepan (dist Alipurduar) 13, Mekhliganj (dist Cooch Behar) 13, Amfu Pundibari (dist Cooch Behar) 11, Falakata (dist Alipurduar) 10, Ghish (dist Jalpaiguri) 10, Leesh River Tea Garden (dist Jalpaiguri) 10, Dalgaon Tea Estate (dist Alipurduar) 9, Washabari Tea Estate (dist Jalpaiguri) 9, Ghughumari (dist Cooch Behar) 8, Kurti T.e. (dist Jalpaiguri) 8, Diana Tea Estate (dist Jalpaiguri) 8, Bhagatpur Tea Estate (dist Jalpaiguri) 8, Ghatia T.e. (dist Jalpaiguri) 8, Chengmari/diana (dist Jalpaiguri) 7, Kumargram (dist Alipurduar) 7, Raidak Tea Estate (dist Alipurduar) 7, Alipurduar (pto) (dist Alipurduar) 7;
- ❖ **Marathawada:** Purna (dist Parbhani) 16, Palam (dist Parbhani) 11;
- ❖ **Assam:** Tinsukia (dist Tinsukia) 13, Gossaigaon_ Aws (dist Kokrajhar) 8, Jiagaon (dist Tinsukia) 8, Dhubri_imd (dist Dhubri) 8;
- ❖ **East Madhya Pradesh:** Bilhari (dist Katni) 11, Lalburra (dist Balaghat) 9;
- ❖ **Himachal Pradesh:** Palampur (dist Kangra) 9;
- ❖ **Arunachal Pradesh:** Longding Aws (dist Longding) 9;
- ❖ **Telangana:** Jakranpalle (dist Nizamabad) 9, Kollapur (dist Nagarkurnool) 9, Kasipet (dist Mancheria) 8, Dhar Palle (dist Nizamabad) 7, Navipet (dist Nizamabad) 7;
- ❖ **Vidarbha:** Hinganghat (dist Wardha) 9, Warora (dist Chandrapur) 8;
- ❖ **Tamil Nadu & Puducherry:** Puducherry Town (dist Puducherry) 8, Vilupuram (dist Villupuram) 7;
- ❖ **Mizoram:** Khawzawl Aws (dist Khawzawl) 8;
- ❖ **Coastal Andhra Pradesh:** Pusapatirega (dist Vizianagaram) 7;
- ❖ **North Interior Karnataka:** Dharwad (dist Dharwad) 7;
- ❖ **West Uttar Pradesh:** Najibabad (dist Bijnor) 7;
- ❖ **Odisha:** Bhapur (dist Nayagarh) 7;
- ❖ **Bihar:** Sikta (dist West Champaran) 7;
- ❖ **Jharkhand:** Tilaiya (dist Koderma) 7.

Table-1								
7 Days Rainfall Forecast								
S.No.	Subdivision	13- Sep	14- Sep	15- Sep	16- Sep	17- Sep	18- Sep	19- Sep
		Day 1	Day 2	Day 3	Day 4	Day 5	Day 6	Day 7
1	ANDAMAN & NICOBAR ISLANDS	WB	WB	WB	WB	WB	WB	WB
2	ARUNACHAL PRADESH	WB	WB	WB	WB	FWS	FWS	FWS
3	ASSAM & MEHGHALAYA	WB	WB	WB	WB	FWS	FWS	SCT
4	NAGALAND, MANIPUR, MIZORAM AND TRIPURA	WB	WB	WB	FWS	FWS	FWS	SCT
5	SUB HIMALAYAN WEST BENGAL & SIKKIM	WB	WB	WB	WB	WB	WB	FWS
6	GANGETIC WEST BENGAL	FWS	FWS	FWS	FWS	FWS	FWS	SCT
7	ODISHA	WB	FWS	FWS	SCT	SCT	SCT	SCT
8	JHARKHAND	FWS	FWS	WB	WB	WB	WB	WB
9	BIHAR	SCT	FWS	FWS	FWS	FWS	SCT	SCT
10	EAST UTTAR PRADESH	ISOL	ISOL	SCT	SCT	SCT	SCT	SCT
11	WEST UTTAR PRADESH	ISOL	ISOL	ISOL	SCT	SCT	ISOL	ISOL
12	UTTARAKHAND	WB	FWS	FWS	FWS	SCT	SCT	SCT
13	HARYANA, CHANDIGARH & DELHI	ISOL	ISOL	ISOL	SCT	SCT	SCT	SCT
14	PUNJAB	ISOL	ISOL	ISOL	SCT	SCT	SCT	SCT
15	HIMACHAL PRADESH	FWS	FWS	SCT	SCT	SCT	SCT	SCT
16	JAMMU AND KASHMIR AND LADAKH	SCT	SCT	SCT	SCT	SCT	SCT	SCT
17	WEST RAJASTHAN	DRY	DRY	DRY	DRY	DRY	ISOL	ISOL
18	EAST RAJASTHAN	ISOL	ISOL	ISOL	ISOL	ISOL	ISOL	ISOL
19	WEST MADHYA PRADESH	ISOL	SCT	FWS	FWS	FWS	FWS	FWS
20	EAST MADHYA PRADESH	SCT	FWS	FWS	FWS	FWS	FWS	FWS
21	GUJRAT REGION	ISOL	SCT	FWS	FWS	FWS	SCT	SCT
22	SAURASHTRA & KUTCH	ISOL	ISOL	SCT	SCT	SCT	ISOL	ISOL
23	KONKAN & GOA	SCT	FWS	WB	FWS	FWS	FWS	FWS
24	MADHYA MAHARASHTRA	SCT	FWS	WB	FWS	FWS	SCT	SCT
25	MARATHWADA	FWS	FWS	FWS	SCT	SCT	SCT	SCT
26	VIDARBHA	WB	WB	WB	WB	FWS	FWS	FWS
27	CHHATTISGARH	WB	WB	FWS	FWS	FWS	FWS	FWS
28	COASTAL ANDHRA PRADESH	FWS	SCT	SCT	SCT	SCT	SCT	FWS
29	TELANGANA	WB	WB	WB	WB	SCT	SCT	SCT
30	RAYALASEEMA	FWS	SCT	ISOL	ISOL	ISOL	SCT	FWS
31	TAMILNADU & PUDUCHERRY	ISOL	ISOL	ISOL	SCT	SCT	SCT	SCT
32	COSTAL KARNATAKA	SCT	FWS	FWS	FWS	WB	WB	FWS
33	NORTH INTERIOR KARNATAKA	WB	WB	WB	FWS	FWS	FWS	FWS
34	SOUTH INTERIOR KARNATAKA	SCT	SCT	SCT	FWS	FWS	FWS	FWS
35	KERALA AND MAHE	ISOL	SCT	FWS	FWS	FWS	SCT	SCT
36	LAKSHADWEEP	SCT	SCT	FWS	SCT	SCT	SCT	SCT

- As the lead period increases forecast accuracy decrease.





- Action may be taken based on ORANGE AND REDCOLOUR warnings.
- Vulnerable regions likely urban and hilly areas action may be initiated for heavy rainfall warning.
- As the lead period increases forecast accuracy decreases.

Detailed districtwise Multi Hazard weather warning for next five days available at
<https://mausam.imd.gov.in/responsive/districtWiseWarningGIS.php>

Weather forecast over Delhi/NCR during 13th to 16th September 2025

Past Weather:

There has been rise in the minimum temperature up to 1°C and no large change in maximum temperature over Delhi/NCR during the past 24 hours. The maximum and minimum temperatures over Delhi were around 33 to 34°C and 23 to 25°C respectively. The minimum and maximum temperatures were near normal. Partly cloudy sky conditions with predominant surface wind from the southwest/west direction with wind speeds up to 20 kmph prevailed during the past 24 hours. Mainly clear sky conditions with a wind speed of less than 14 kmph from the west direction prevailed over the region in the forenoon today.

Weather Forecast:

13.09.2025: Mainly clear sky becoming partly cloudy sky towards afternoon. The maximum and minimum temperatures over Delhi are likely to be in the range of 34 to 36°C. The maximum temperature will be above normal up to 1 to 2°C. The predominant surface wind will likely to be from the northwest direction with a wind speed of up to 20-25 kmph during afternoon hours. The wind speed will decrease becoming less than 15 kmph from the northwest direction during the evening and night.

14.09.2025: Mainly clear sky becoming partly cloudy sky towards afternoon. Possibility of very light rain likely at isolated places. The maximum and minimum temperatures over Delhi are likely to be in the range of 33 to 35°C and 24 to 26°C respectively. The minimum temperature will be near normal and the maximum temperature will be above normal up to 1 - 2°C. The predominant surface wind will likely to be from the northwest direction with a wind speed of up to 20-22 kmph during morning hours. The wind speed will gradually increase becoming less than 25 kmph from the northwest direction in the afternoon. The wind speed will decrease becoming less than 12 kmph from the southwest direction during the evening and night.

15.09.2025: Mainly clear sky. The maximum and minimum temperatures over Delhi are likely to be in the range of 33 to 35°C and 23 to 25°C respectively. The minimum temperature will be below normal up to 1 - 2°C and the maximum temperature will be above normal up to 1 - 2°C. The predominant surface wind will likely to be from the northwest direction with a wind speed of up to 15-20 kmph during morning hours. The wind speed will gradually increase becoming less than 25 kmph from the northwest direction in the afternoon. The wind speed will decrease becoming less than 15 kmph from the southwest direction during the evening and night.

16.09.2025: Mainly clear sky. The maximum and minimum temperatures over Delhi are likely to be in the range of 33 to 35°C and 24 to 26°C respectively. The minimum temperature temperatures will be near normal and the maximum temperature will be above normal up to 1 - 2°C. The predominant surface wind will likely to be from the northwest direction with a wind speed of up to 15-20 kmph during morning hours. The wind speed will gradually increase becoming less than 25 kmph from the northwest direction in the afternoon. The wind speed will decrease becoming less than 15 kmph from the southwest direction during the evening and night.

Impact & Action Suggested due to

- ❖ **Heavy to very heavy rainfall (12-20 cm)** at isolated places over Uttarakhand, Nagaland, Manipur, Mizoram & Tripura, Telangana on 13th; Arunachal Pradesh during 13th -16th; Sub-Himalayan West Bengal & Sikkim on 13th & 14th; Assam & Meghalaya, Konkan & Goa on 14th & 15th; Bihar during 14th-16th and Madhya Maharashtra on 15th September.

Impact Expected

- Localized Flooding of roads, water logging in low lying areas and closure of underpasses mainly in urban areas of the above region.
- Occasional reduction in visibility due to heavy rainfall.
- Disruption of traffic in major cities due to water logging in roads leading to increased travel time.
- Minor damage to kutchha roads.
- Possibilities of damage to vulnerable structure.
- Localized Landslides/Mudslides/landslips/mudslips/landsinks/mudsinks.
- Damage to horticulture and standing crops in some areas due to inundation.
- It may lead to riverine flooding in some river catchments (for riverine flooding please visit Web page of CWC)

Action Suggested

- Check for traffic congestion on your route before leaving for your destination.
- Follow any traffic advisories that are issued in this regard.
- Avoid going to areas that face the water logging problems often.
- Avoid staying in vulnerable structure.

Agromet advisories for likely impact of Heavy / Heavy to Very Heavy Rainfall

- In Uttarakhand, drain out excess water from fields of green gram, black gram, soybean, barnyard millet and finger millet in Sub Humid Sub Tropic Zone. In Bhabar and Tarai Zone, maintain proper drainage in fields of rice, pigeon pea, black gram, green gram, finger millet, maize and soybean. Avoid sowing of potato and radish under heavy rainfall conditions and ensure proper drainage in already sown crop. In Hill Zone, undertake harvesting of matured crops of barnyard millet, ginger and rainfed rice and keep the harvested produce in safe place. Ensure proper drainage in pigeon pea and vegetable crops.
- In Arunachal Pradesh, immediately harvest matured crops of *Jhum* rice, soybean, finger millet, foxtail millet, vegetables, matured bunches of banana and matured fruits of apple and kiwi and shift to properly covered shelter. Maintain proper drainage in standing crops such as rice, soybean, finger millet, vegetables and fruit orchards to avoid water stagnation. Avoid fresh sowing of French bean during heavy rainfall and ensure proper drainage in already sown crop.
- In Assam, ensure proper drainage in fields of rice, sugarcane, black gram and sesame in Hill Zone. In Lower Brahmaputra Valley Zone, ensure proper drainage system in *Sali* rice fields and nursery bed of vegetables. Cover the nursery bed with thin polythene to avoid the damages due to heavy rainfall. In Barak Valley Zone, postpone the sowing of green gram and black gram and provide adequate drainage facilities in fields of rice, vegetables and already sown green gram and black gram.
- In Meghalaya, maintain proper drainage in ginger and vegetable fields and fruit orchards. Provide support to tall and fragile crops like banana, papaya, pumpkin, etc. to prevent lodging.
- In Manipur, harvest matured colocasia and matured pods of soybean.
- In Sub-Himalayan West Bengal, drain out excess water from *aman* paddy and vegetable fields (chilli, bitter gourd, pointed gourd, okra, brinjal etc.) in Terai Zone.
- In Bihar, ensure proper drainage of excess rainwater from standing crops such as maize and vegetables in North West Alluvial Plain Zone and maize, finger millet and vegetables in North East Alluvial Zone.
- In Maharashtra, immediately harvest matured crops of green gram and black gram in Madhya Maharashtra and matured fruits of sapota and custard apple in Marathwada and keep the harvested produce at safer places. In Vidarbha, store the harvested produce of green gram and black gram at safe places, if storage is not possible cover the harvested produce with plastic or tarpaulin sheets. Make arrangements to drain out excess water from fields of vegetables and fruit orchards in Konkan; rice, sugarcane, pigeon pea, soybean, maize, vegetables and fruit orchards in Madhya Maharashtra; sugarcane, sorghum, soybean, turmeric, vegetables and fruit orchards in Marathwada; pigeon pea, cotton, soybean, maize, vegetables and fruit orchards in Vidarbha.
- In Andhra Pradesh, make arrangements to drain out excess water from fields of rice, maize, cotton, mesta, green gram, black gram, groundnut, sugarcane, and vegetables in North Coastal Zone; rice, sugarcane, maize, finger millet, groundnut, ginger, turmeric, vegetables and fruit orchards in High Altitude Tribal Zone and rice, maize, pigeon pea and cotton in Krishna Godavari Zone.
- In Telangana, ensure adequate drainage facilities in fields of rice, maize, cotton, soybean, pigeon pea, turmeric and vegetables to drain out excess rain water.

Livestock / Fishery

- Keep the animals inside the shed during heavy rainfall and provide them balanced feed.
- Store feed and fodder in a safe place to prevent spoilage.
- Construct an outlet with proper netting around the ponds to drain out excess water, thereby preventing fish from escaping in case of overflow.

Agromet advisories for likely impact of Thunderstorm / Gusty Winds / Squally Winds

- Provide mechanical support to horticultural crops and staking or support to vegetables and young fruit plants / fruit-bearing plants to avoid lodging due to strong winds.

Legends & abbreviations:

- ❖ **Heavy Rain:**64.5-115.5mm; **Very Heavy Rain:**115.6-204.4mm; **Extremely Heavy Rain:** >204.4mm.
- ❖ **Obsy:** Observatory; Automatic Weather Station; **ARG:** Automatic Rain Gauge; **dist:** District; **NH:** National Highway; **KVK:** Krishi Vigyan Kendra; **DVC:** Damodar Valley Corporation; **PTO:** Part Time Office, **Aero:** Aerodrome, **IAF:** Indian Air Force.
- ❖ **Region wise classification of meteorological Sub-Divisions:**
 - **Northwest India:** Western Himalayan Region (Jammu-Kashmir-Ladakh-Gilgit-Baltistan-Muzaffarabad, Himachal Pradesh and Uttarakhand); Punjab, Haryana-Chandigarh-Delhi; West Uttar Pradesh, East Uttar Pradesh, West Rajasthan and East Rajasthan.
 - **Central India:** West Madhya Pradesh, East Madhya Pradesh, Vidarbha and Chhattisgarh.
 - **East India:** Bihar, Jharkhand, Sub-Himalayan West Bengal & Sikkim; Gangetic West Bengal, Odisha and Andaman & Nicobar Islands.
 - **Northeast India:** Arunachal Pradesh, Assam & Meghalaya and Nagaland, Manipur, Mizoram & Tripura.
 - **West India:** Gujarat Region, Saurashtra & Kutch, Konkan & Goa, Madhya Maharashtra and Marathawada.
 - **South India:** Coastal Andhra Pradesh & Yanam, Telangana, Rayalaseema, Coastal Karnataka, North Interior Karnataka, South Interior Karnataka, Kerala & Mahe, Tamil Nadu, Puducherry & Karaikal and Lakshadweep.

LEGENDS

1. अंडमान और निकोबार द्वीपसमूह

2. अरुणाचल प्रदेश

3. असम और मेघालय

4. नागालैंड, मणिपुर, मिजोरम और त्रिपुरा

5. उप-हिमालयी पश्चिम बंगाल और सिक्किम

6. गंगीय पश्चिम बंगाल

7. ओडिशा

8. झारखंड

9. बिहार

10. पूर्वी उत्तर प्रदेश

11. पश्चिम उत्तर प्रदेश

12. उत्तराखंड

13. हरियाणा, चंडीगढ़ और दिल्ली

14. पंजाब

15. हिमाचल प्रदेश

16. जम्मू और कश्मीर और लद्दाख

17. पश्चिम राजस्थान

18. पूर्वी राजस्थान

19. पश्चिम मध्य प्रदेश

20. पूर्वी मध्य प्रदेश

21. गुजरात

22. सौराष्ट्र

23. कोंकण और गोवा

24. मध्य महाराष्ट्र

25. मराठवाड़ा

26. विदर्भ

27. छत्तीसगढ़

28. तटीय आंध्र प्रदेश और यनम

29. तेलंगाना

30. रायलसीमा

31. तमिलनाडु, पुडुचेरी और कराईकल

32. तटीय कर्नाटक

33. आंतरिक उत्तरी कर्नाटक

34. आंतरिक दक्षिणी कर्नाटक

35. केरल और माहे

36. लक्षद्वीप



1. Andaman & Nicobar Islands

2. Arunachal Pradesh

3. Assam & Meghalaya

4. Nagaland, Manipur, Mizoram & Tripura

5. Sub-Himalayan West Bengal & Sikkim

6. Gangetic West Bengal

7. Odisha

8. Jharkhand

9. Bihar

10. East Uttar Pradesh

11. West Uttar Pradesh

12. Uttarakhand

13. Haryana, Chandigarh & Delhi

14. Punjab

15. Himachal Pradesh

16. Jammu & Kashmir and Ladakh

17. West Rajasthan

18. East Rajasthan

19. West Madhya Pradesh

20. East Madhya Pradesh

21. Gujarat

22. Saurashtra

23. Konkan & Goa

24. Madhya Maharashtra

25. Marathwada

26. Vidarbha

27. Chhattisgarh

28. Coastal Andhra Pradesh & Yanam

29. Telangana

30. Rayalaseema

31. Tamilnadu, Puducherry & Karaikal

32. Coastal Karnataka

33. North Interior Karnataka

34. South Interior Karnataka

35. Kerala & Mahe

36. Lakshadweep

SPATIAL DISTRIBUTION (% of Stations reporting)

% Stations	Category	% Stations	Category
76-100	Widespread (WS/Most Places)	26-50	Scattered (SCT/A Few Places)
51-75	Fairly Widespread (FWS/Many Places)	1-25	Isolated (ISOL)



Fog



Heavy Rain



Very Heavy Rain



Extremely Heavy Rain



Thunder & Lightning



Hailstorm



Dust Raising Winds



Heavy Snow



Dust Storm



Heat Wave



Warm Night



Hot Day



Hot & Humid



Strong Surface Winds



Cold Wave



Cold Day



Ground Frost

COLOUR CODED WARNING

No Warning (No Action)

Watch (Be Aware)

Alert (Be Prepared To Take Action)

Warning (Take Action)

Probabilistic Forecast

Terms	Probability of Occurrence (%)
Unlikely	< 25
Likely	25 - 50
Very Likely	50 - 75
Most Likely	> 75

* Red colour warning does not mean "Red Alert", Red colour warning means "Take Action".

Forecast and Warning for any day is valid from 0830 hours IST of day till 0830 hours IST of next day.

For more details, kindly visit <https://mausam.imd.gov.in> or contact: 011-2434-4599

(Service to the Nation since 1875)

DEFINITION/CRITERIA

Rain/ Snow *

Heavy: 64.5 to 115.5 mm/cm *
Very Heavy: 115.6 to 204.4 mm/cm *
Extremely Heavy: > 204.4 mm/cm *

Heat Wave

When maximum temperature of a station reaches $\geq 40^{\circ}\text{C}$ for plains and $\geq 30^{\circ}\text{C}$ for hilly regions

(a) Based on Departure from normal

Heat Wave: Maximum Temperature Departure from normal 4.5°C to 6.4°C .

Severe Heat Wave: Maximum Temperature Departure from normal $\geq 6.5^{\circ}\text{C}$

(b). Based on Actual maximum temperature

Heat Wave: When actual maximum temperature $\geq 45^{\circ}\text{C}$.

Severe Heat Wave: When actual maximum temperature $\geq 47^{\circ}\text{C}$.

(c). Criteria for heat wave for coastal stations

When maximum temperature departure is $> 4.5^{\circ}\text{C}$ from normal. Heat Wave may be described provided maximum temperature $\geq 37^{\circ}\text{C}$.

Warm Night

When maximum temperature remains 40°C

Warm Night: When minimum temperature departure 4.5°C to 6.4°C .

Severe Warm Night: When minimum temperature departure $> 6.4^{\circ}\text{C}$.

Cold Wave

When minimum temperature of a station $\leq 10^{\circ}\text{C}$ for plains and $\leq 0^{\circ}\text{C}$ for hilly regions.

(a). Based on departure

Cold Wave: Minimum Temperature Departure from normal -4.5°C to -6.4°C .

Severe Cold Wave: Minimum Temperature Departure from normal $\leq -6.5^{\circ}\text{C}$

(b) Based on actual Minimum Temperature (for Plains only)

Cold Wave: When Minimum Temperature is $\leq 4.0^{\circ}\text{C}$

Severe Cold Wave: When Minimum Temperature is $\leq 2.0^{\circ}\text{C}$

(c) For Coastal Stations

When Minimum Temperature departure is $\leq -4.5^{\circ}\text{C}$ & actual Minimum Temperature is $\leq 15^{\circ}\text{C}$

Cold Day

When minimum temperature of a station $\leq 10^{\circ}\text{C}$ for plains and $\leq 0^{\circ}\text{C}$ for hilly regions

Based on departure

Cold Day: Maximum Temperature Departure from normal -4.5°C to -6.4°C .

Severe Cold Day: Maximum Temperature Departure from normal $\leq -6.5^{\circ}\text{C}$

Fog

Phenomenon of small droplets suspended in air and the horizontal visibility $< 1\text{km}$

Moderate Fog: When the visibility between 500-200 metres

Dense Fog: when the visibility between 50- 200 metres

Very Dense Fog: when the visibility < 50 metres

Thunderstorm

Sudden electrical discharges manifested by a flash of light (Lightning) and a sharp rumbling sound (thunder)

Dust/Sand Storm

An ensemble of particles of dust or sand energetically lifted to great heights by a strong and turbulent wind.

Frost

Ice deposits on ground

Air temperature $\leq 4^{\circ}\text{C}$ (over Plains)

Squall

A strong wind that rises suddenly, lasts for atleast 1 minute.

Moderate: Wind speed 52-61 kmph

Severe: Wind speed 62-67 kmph

Very Severe: Wind speed > 67 kmph

Sea State

Effect of various waves in the sea over specific area

Rough to very rough: Wind speed 41-62 kmph (22-33 knots) & Wave height 2.5-6 metre

High to very high: Wind speed 63-117 kmph (34-63 knots) & Wave height 6-14 metre

Phenomenal: Wind speed > 117 kmph (> 63 knots) & Wave height > 14 metre

Cyclone

Cyclonic Storm: Wind speed 62-87 kmph (34-47 knots)

Severe Cyclonic Storm: Wind speed 88-117 kmph (48-63 knots)

Very Severe Cyclonic Storm: Wind speed 118-165 kmph (64 - 89 knots)

Extremely Severe Cyclonic Storm: Wind speed 166-220 kmph (90 -119 knots)

Super Cyclone Storm: Wind speed > 220 kmph (> 119 knots)

* Red colour warning does not mean "Red Alert", Red colour warning means "Take Action".

Forecast and Warning for any day is valid from 0830 hours IST of day till 0830 hours IST of next day.

For more details, kindly visit <https://mausam.imd.gov.in> or contact: 011-2434-4599

(Service to the Nation since 1875)

Hot and Humid: When maximum temperatures remain 3°C above normal along with the above normal relative humidity.